







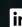
PRESENTS

THEATRICAL
OUTFIT

— KEN LUDWIG'S —

BASKERVILLE: MYSTERY

NOVEMBER 17 – DECEMBER 19, 2021

THEATRICALOUTFIT.ORG • (678) 528-1500 •     

SPONSORED BY

**Goldman
Sachs**

— KEEP THE CONVERSATION GOING WITH THE HASHTAG #toBASKERVILLE —

FRIENDS,

Welcome back to Theatrical Outfit, and to this production of *Ken Ludwig's Baskerville: A Sherlock Holmes Mystery!*

To celebrate the holidays this year, we wanted to bring you a play that combines an adventurous spirit with dynamic theatricality. Something the whole family could enjoy, that would bring us back together in community, and that would offer an opportunity to have some fun. *Baskerville* is the perfect play to do just that!

Based on the most famous case of the world's most famous detective, *Baskerville* combines thrilling mystery with outrageous comedy and is written by one of America's most accomplished comic playwrights. Best known for *Crazy for You* and *Murder on the Orient Express*, Ken Ludwig is renowned for his sharp eye for character, mastery of comic rhythm, and shameless love of jokes. His work has been celebrated throughout the theatre and has won both the TONY and Olivier awards. *Baskerville*, which layers Ludwig's deep love of the original Sherlock Holmes stories and novels onto his love of zany theatrical mayhem, tasks an ensemble of 5 actors with portraying nearly 40 characters, demanding impossible quick changes, a *Downton Abbey*'s worth of British dialects, and athletic physical comedy.

Luckily, we have assembled an extraordinary team of Atlanta actors for this production, under the skilled and playful direction of Shannon Eubanks. Veteran local actors Lala Cochran, Robin Bloodworth, and Gina Rickicki are joined by two brand new Atlantans, John Keabler and Katie Tkel, and a crack design team of TO favorites who are attempting to defy the laws of physics.

We are also delighted to be partnering with our friends at Atlanta Children's Shelter during this holiday season to gather donations of toys and other necessities and to share information about the extraordinary work they are doing just a few blocks away from our downtown home. Please check out the information in this playbill, in the lobby, and on our website to learn more.

THANK YOU AND ENJOY THE SHOW!

MATT TORNEY
ARTISTIC DIRECTOR

GRETCHEN E. BUTLER
MANAGING DIRECTOR

KEN LUDWIG'S BASKERVILLE: A SHERLOCK HOLMES MYSTERY

SPONSORED BY **Goldman
Sachs**

STARRING

JOHN KEABLER* AS SHERLOCK HOLMES & LALA COCHRAN AS DR. WATSON

— WITH —

ROBIN BLOODWORTH* • KATHRYN TKEL* • GINA RICKICKI

DIRECTOR
SHANNON EUBANKS

DIALECT COACH
ELISA CARLSON

FIGHT CHOREOGRAPHER
JAMES DONADIO

SCENIC DESIGNER
STEPHANIE BUSING

COSTUME DESIGNER
MARIE QUINTERO

LIGHTING DESIGNER
MARY PARKER

SOUND DESIGNER
JAMES BIGBEE GARVER

SPECIALTY PROPERTIES DESIGNER
RYAN BRADBURN

HAND PROPERTIES DESIGNER
CAROLINE COOK

STAGE MANAGER
KATIE SCARLETT GRAVES *

UNDERSTUDIES
DAVID J COWAN
ERIN C DAVIS
KEVIN LOMBARD
KESHAWN MELLON

PRODUCTION TEAM

PRODUCTION COORDINATORS
KATE JONES
LINDSEY SHARPLESS

CASTING DIRECTOR
ADDAE MOON

PRODUCTION ASSISTANT
GABBY PERALTA

WARDROBE
KAT DEZELL
LEAD ELECTRICIAN
ETHAN WEATHERSBEE
ELECTRICIANS
ALEX OAKLEY
TOM PRIESTER

CARPENTERS
WILL DAVENPORT
MITCHELL PATTERSON
SCENIC PAINTER
DANIKA NOELLE YACIK
COVID-19 COMPLIANCE OFFICER
DANIELA SANTIAGO

"Ken Ludwig's Baskerville: A Sherlock Holmes Mystery" is presented by arrangement with
Concord Theatricals on behalf of Samuel French, Inc. www.concordtheatricals.com

"Ken Ludwig's Baskerville: A Sherlock Holmes Mystery" was originally produced by
McCart Theatre Center, Princeton, NJ

Emily Mann, Artistic Director; Timothy J. Shields, Managing Director
and

Arena Stage, Washington, DC
Molly Smith, Artistic Director, Edgar Dobie, Executive Producer

THEATRICAL OUTFIT STAFF

ARTISTIC DIRECTOR
MATT TORNEY

MANAGING DIRECTOR
GRETCHEN E BUTLER

ASSOCIATE ARTISTIC DIRECTOR
ADDAE MOON

MARKETING DIRECTOR
RYAN OLIVETI

HOUSE MANAGER
WENDELL JOHNSON

GENERAL MANAGER
ROCHELLE SHINN

TECHNICAL DIRECTOR
MONTY WILSON

APPRENTICE COMPANY
KAT DEZELL
NESTOR LOMELI
KESHAWN MELLON
GABBY PERALTA
ANGELA YANG

DEVELOPMENT DIRECTOR
TESS MALIS KINCAID

BOX OFFICE MANAGER
ABAGAIL DAWKINS

THANK YOU TO OUR 2021 - 2022 SEASON SPONSORS



MAYOR'S OFFICE
OF
CULTURAL AFFAIRS



FULTON COUNTY
arts & culture



This program is supported in part by Georgia Council for the Arts through the appropriations of the Georgia General Assembly. Georgia Council for the Arts also receives support from its partner agency - the National Endowment for the Arts.

This project is supported in part by an award from the National Endowment for the Arts. To find out more about how NEA grants impact individuals and communities, visit www.arts.gov.

Major support is provided by the City of Atlanta Mayor's Office of Cultural Affairs.

Funding for this program is provided by the Fulton County Board of Commissioners.

VISION: A compassionate community grounded in dignity, justice, and equity

MISSION: Produce world-class theatre that starts the conversations that matter

VALUES: WE CREATE THEATRE WITH A PURPOSE • Our work has the power to deepen connections, promote understanding, and serve as a catalyst for change

WE INVEST IN ATLANTA • By creating a home for artists in Atlanta and investing in meaningful relationships with our community, we help build a brighter future for our city

WE LIVE OUR VALUES • Inclusion and a sense of belonging are part of who we are and central to how we work

In order to create an inclusive and safe space, and to move towards a more equitable future, we acknowledge the harms that have been and continue to be perpetuated against people of color in our theatre, our city, our country, and our world.

LAND ACKNOWLEDGEMENT

Long before the foundation of the state of Georgia, the territory which Atlanta now occupies was the home of the Muscogee (Creek) people. During the Trail of Tears in the 1830s, many of these communities were forcibly removed from the state, and there was an intentional erasure of their cultural and religious practices as well as their individual rights.

We stand in solidarity with indigenous peoples across the United States. We recognize the harm caused to them by colonialism and commit to learning more about the true history of our region, and our place within it.

ANTI-RACISM COMMITMENTS

To work towards a more inclusive environment, the staff and board of Theatrical Outfit commit to the following:

- Our programming will reflect the diversity of Atlanta and the communities we serve, including the selection of plays, writers, creative teams, casts, and technicians
 - We will consciously diversify our staff and foster an inclusive culture
 - We will actively recruit board members from diverse backgrounds
 - We will prioritize vendors from MWBE (Minority/Women-owned Business Enterprises)
 - We will actively engage our community, sharing our space and resources and including the community in our work
 - We will provide regular inclusion and anti-racist training for our staff and board to create a welcome environment for staff, artists, and audiences
 - We will continue to actively listen, learn, and act to end racism
-



JOHN KEABLER* (SHERLOCK HOLMES) [HE/HIM] is a bluegrass junky from Kentucky and recent transplant to Atlanta ... a transplAtlanta if you will. He is ecstatic to be doing his first show at Theatrical Outfit. His Broadway credits include ... none, he has never been on Broadway. Regionally John has performed leading roles for The Shakespeare Theatre Company of DC, The Shakespeare Theatre Company of New Jersey, Pennsylvania Shakespeare Theatre Festival, The Old Globe, Perserverance Theatre in Alaska, Contemporary American Theatre Festival, Syracuse Stage, Portland Stage Company, Florida Studio Theatre and Creede Repertory. On television you may have seen him on "30 Rock," "Madam Secretary," "All My Children," "NASCAR: Rise of American Speed," and "The Men Who Built America" ... but you probably didn't. He received his MFA from The Old Globe Remedial Actors Training Program. Keep up with his shenanigans at www.JohnKeabler.com.



LALA COCHRAN (DR. WATSON) [SHE/HER] couldn't be happier to emerge from the dregs of the pandemic and land at TO! She was last seen on this stage in the 2013 - 2014 Season in *The Best of Enemies* for which she received a Suzi Bass award for 'Best Featured Actress In A Play.' La stayed busy during the pandemic by creating a smash hit cooking show, naturally called *Cooking a la Lala*, produced by Horizon Theatre. Thank you all for supporting the very important work of live theatre, enjoy the show!



ROBIN BLOODWORTH * (ACTOR I) [HE/HIM] is very glad to be back at TO (and be working in a theater again!) Selected World Premiers: *Under The Radar* (Payomet Performing Arts Center); *Hopper's Ghosts* (Provincetown Playhouse); *Nick's Flamingo Grill and Klondike* (Alliance Theater); *Girl Science* (EST), *The Kritik* and *The Deer and the Antelope* (Harbor Stage); *This Passion Thing*, *The Piano Men*, *Intersection of Dreams*, and *Irish, Young, Sexy and Talented?* (NY Fringe Festival). Selected Regional Theater: *Time Stands Still* (Suzi Award winner), *Clybourne Park* (Suzi Award winner), *Gaslight*, *A Doll's House*, *Macbeth*, *Of Mice and Men* (2010 National Tour), *Equivocation*, *Ah, Wilderness!* (75th Anniversary Revival), *Fiction*, *Art*, *Cloud 9* (20th Anniversary NY Revival), and *Much Ado About Nothing* (OOBR winner). TV/Film: *Those Who Deserve to Die*, *Anatomy of the Throat*, *Midnight Edition*, *Talk Show*, "Halt and Catch Fire," "Your Worst Nightmare," "Swamp Murders," "Necessary Roughness," "The Game," "House of Payne," and "In the Heat of the Night." Proud Equity member. Thank you to Shannon and Melissa!

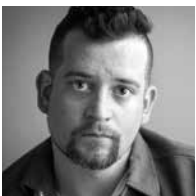


KATHRYN TKEL * (ACTOR 2) [SHE/HER] is making her Theatrical Outfit debut & marking her first show in Atlanta and she is just thrilled about it! Select Regional Credits include: *Sense and Sensibility*, *Timon of Athens* (Folger Theatre); *An Octoroon* (Woolly Mammoth); *Cock* (Studio Theatre); *Jefferson's Garden*, *The Guard*, *Death of a Salesman* (Ford's Theatre); *A Doll's House Part 2*, *The Curious Incident of the Dog in the Night Time*, *Christmas at Pemberley* (Round House Theatre); *A Midsummer Night's Dream*, *Henry IV, Part 1* (Pennsylvania Shakespeare Festival); *Amadeus* (North Coast Rep); *Cyrano de Bergerac* (Perseverance Theatre); *Venus in Fur*, *The 39 Steps*, *Hunting and Gathering* (Rep Stage); *Romeo and Juliet* (Arizona Theatre Company); *Christmas at Pemberley* (Cincinnati Playhouse in the Park); *The Wanderers* (Theatre J); *Fickle!* (Olney Theatre Center); *By the Way Meet Vera Stark* (Everyman Theatre); *Secret Order*, *Legacy of Light* (San Jose Rep); *The Story*, *Den of Thieves* (SF Playhouse). She can also be seen on screen in the film *Harriet*. MFA from The Shakespeare Theatre Company's Academy for Classical Acting. www.KathrynTkel.com



GINA RICKICKI (ACTOR 3) [SHE/HER] is an actor, improviser, and writer based in Atlanta. This is her second time at T.O. (*Lost in the Cosmos*), and her first time back on stage since the "Pandy" started- what a thrill! Gina is known for her grounded, wide-ranging character work. You might recognize her from roles all over Atlanta theatre, from farcical modern comedies to Shakespearean tragedies. Recent notables include

Regan (*King Lear*, Shakespeare Tavern), Senator Allison Haines (*Angry F*gs*, 7 Stages), Savior (*Ravens and Seagulls*, Essential Theatre), Nurse (*Romeo and Juliet*, Shakespeare Tavern), The Visitor (*Brick by Brick I Will Tear Your World Apart*, Dismantle Theatre), and the Suzi-winning ensemble farce *Let Nothing You Dismay* at Stage Door Players. She is a company member of Dad's Garage Theatre, where she's been starring in scripted and live improv shows for over 10 years. Her voice acting can be found in such productions from I Heart Radio shows as *13 Days of Halloween*, *The Second Oil Age*, and *Strange Arrivals*. She performs her writing at various live literature events around Atlanta, such as Write Club Atlanta. And if the algorithm hits just right, you might find her as the spokesperson Fleetcard Barb on national commercials for Fleetcards USA. Insta: Gina_Rickicki. Thank you for supporting live theatre!



DAVID J COWAN (U/S SHERLOCK HOLMES) [HE/HIM] is originally from Boise Idaho, where he started acting at the age of 13. David is now thrilled to call the Atlanta area his home. David just received his M.F.A in Acting from University of Georgia where he played notable roles such as Inspector Kemp in *Young Frankenstein* and Rawdon/Mr. Sedley in Kate Hamill's adaptation of *Vanity Fair*. On Screen he has been featured on HBO'S "Watchmen" and independent films. He is represented by Carol Shaginaw Talent Agency. When he's not acting, he loves to cook, hike, and spend time with

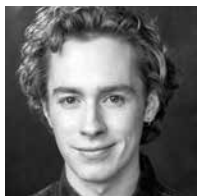
his cat Fiona. David is thrilled to make his Theatrical Outfit debut and be back in a live theater once again! Namaste lovelies.

ERIN C DAVIS (U/S ACTOR 3) [SHE/HER] is making her introduction to the Atlanta



Theatre community with this production. Her first stage audition in the city was at the Atlanta Theatre Conference showcase in September, so she is excited and honored to join this community of artists. Previous theater credits include: Izzy in *Rabbit Hole* (her favorite to date), Felicia in *I Hate Hamlet*, Hermia in *A Midsummer Night's Dream*, and both Benvolio and Balthasar in *Romeo and Juliet*. Besides stage work, Erin works frequently in Atlanta's film and television industry, and was cast as a bank robbery hostage in HBO's "Watchmen" and as Riz Ahmed's aide in the movie *Jason Bourne*. She has also done her fair share of crime reenactments, short indie films, and commercials for companies such as Toyota, Frigidaire, and Moen Appliances.

KEVIN LOMBARD (U/S ACTOR 1) [HE/HIM] is an Atlanta-based actor and writer and is



excited to make his Theatrical Outfit debut. ATL Theatre: Out Front (*Dead Gay Body*), Aris (*The Legend of Finn McCool*), New Theatre in the Square (*A View from A Bridge*), Enter Messenger (*Measure for Measure*). Educational: *Lungs*, *This Is Our Youth*, *The King Stag*, *The Few*, and multiple productions with the Boston Shakespeare Project. He appears in Netflix's "Teenage Bounty Hunters," and is the voice of Bushmills

Irish Whiskey on iHeart Radio. His TV pilot "Out" was a quarterfinalist at the 2020 Big Break Diverse Voice Competition. He is a graduate of Tufts University and the Shakespeare summer course at the London Academy of Music and Dramatic Art.

KESHAWN MELLON (U/S DR. WATSON & ACTOR 2) [HE/HIM] recently graduated from



Ohio University with his BFA in Acting. At OU, he performed in *A Woog Among the Waves* (Alan), *Macbeth* (Lennox), *People, Places, and Things* (T), *She Kills Monsters* (Chuck), *Engagements* (Ryan), and various other productions. His other credits included *Ripe Frenzy* (Bryan James McNamara) at Capital Stage and *Evelyn and His Brothers* (Marion) at Tantrum East. During the summer of 2019, he attended

the life changing intensive Theatermakers at The National Theater Institute, where he was awarded the Miranda Family scholarship and became a Miranda Family Fellow. The following summer of 2020 he co-founded Vibrancy Theater and was their Co-Artistic Director until May 2021. He enjoyed the summer by catching up on his favorite TV shows, movies, plays, and books.

Goldman Sachs
is proud to support
Theatrical Outfit's
production of
Ken Ludwig's
Baskerville: A Sherlock
Holmes Mystery

Congratulations to
the cast and crew!



KEN LUDWIG (PLAYWRIGHT) has had six shows on Broadway, seven in London's West End, and many of his works have become a standard part of the American repertoire. His 28 plays and musicals have been performed in over 30 countries in more than 20 languages and are produced throughout the United States every night of the year. *Lend Me a Tenor* won two Tony Awards and was called "one of the classic comedies of the 20th century" by The Washington Post. *Crazy For You* was on Broadway for 5 years and won the Tony and Olivier Awards for Best Musical. In addition, he has won the Edgar Award for Best Mystery of the Year, two Laurence Olivier Awards, two Helen Hayes Awards, and the Edwin Forrest Award for Contributions to the American Theater. His plays have starred, among others, Alec Baldwin, Carol Burnett, Tony Shaloub, Joan Collins and Hal Holbrook. His stage version of *Murder on the Orient Express* was written expressly at the request of the Agatha Christie Estate, and his latest play, *Dear Jack, Dear Louise*, won the 2020 Charles MacArthur Award for Best New Play of the Year and is optioned for Broadway. His book *How To Teach Your Children Shakespeare*, published by Penguin Random House, won the Falstaff Award for Best Shakespeare Book of the Year, and his essays are published in the Yale Review. He is a graduate of Harvard and Cambridge and is a frequent guest speaker for groups as varied as The Oxford-Cambridge Society, The Jane Austen Society of North America, The Folger Shakespeare Library, and The Baker Street Irregulars. For more information, see his website at www.kenludwig.com.

SHANNON EUBANKS (DIRECTOR) [SHE/HER] has been underfoot in show business for decades, cluttering up the place as an actor/director for both theatre and camera. *Baskerville* marks the 22nd show she's directed in Atlanta, after directing another 20 in Los Angeles and regional repertory. A few in Atlanta: *Let Nothing You Dismay* (Suzi Awards, Best Ensemble, Best World Premiere); *Sleuth* (Suzi nominee, Best Director), *Emilie: The Marquise Du Chatelet Defends Her Life Tonight* (Top 10 Plays, Arts Atlanta); *Swell Party* (Suzi nominee, Best World Premiere, Top 10 Plays, Arts Atlanta). A few on the West Coast: *Rosencrantz And Guildenstern Are Dead*, *Henry V*, *Richard III* (all Best Production nominees, Los Angeles Theater Alliance); *Wetter Than Water* (Best Director nominee, L.A.T.A.); *Her Infinite Variety* (Best Original Work, L.A.T.A.). In Repertory, *The Changeling* for Alabama Shakespeare Festival's New Stages. Right before the COVID curtain slammed down on all of us, she'd directed the short film *Mend* for the festival circuit (Best Film, Best Screenplay, Best Director, Best Actor, Best Dramatic Short—U.S. and Canada, Women in Film Award, Best of the Fest) and the first season of the comedy Web Series "Walter Frisk Let's Go." With open arms, welcome back to live theatre — the affection rolls out from the stage and surrounds you from Curtain Up to Finale, with all our thanks for making our beloved storytelling mission possible. J, K & J, & F: you are my heart.

ELISA CARLSON (DIALECT COACH) [SHE/HER] loves working at TO, where she has coached multiple productions, directed *The Guys* and *Moxie*, and acted in *The Book of Will*. Atlanta coaching: 45 productions at the Alliance, multiple productions at Georgia Shakespeare (Associate Artist) and Actor's Express.

New York/Off-Broadway: The Mint, New Dramatists. Regional: Guthrie Theater (Minneapolis/30 productions), Oregon Shakespeare Festival, The Alley Theatre (Houston), American Players Theatre (WI), Delaware REP. Film & TV coaching includes all historic voices for Damien Chazelle's *First Man* and Ava Duvernay's *Selma*, *Baby Driver* (Golden Globe nomination for Ansel Elgort), *Burden*, *Coat of Many Colors*, *The Good Lie*, Campbell Scott's *Hamlet*, "Stranger Things." Recent acting: *Woman and Scarecrow* (Aris), *Ghost-Writer* (TITS/Suzi Nomination) and the world premiere of *Shadow Language* (Guthrie Theater). Directing credits include multiple productions for the Gainesville Theatre Alliance (Resident Director) and Guthrie Theater BFA Program, Alliance Reiser Lab, Theater Emory. Elisa is Professor of Theatre at the University of North Georgia/GTA. www.elisacarlson.com.

JAMES DONADIO (FIGHT CHOREOGRAPHER) [HE/HIM] better known to Atlanta audiences as an Actor and Director, has also been a Fight Choreographer for theatres around the country since 1972. Early training in Competitive Fencing on the team at University of Colorado and with world champion and gold medalist Ion Drimba, and for Stage and Film with the famed Fight Masters Chuck Wilcox, Ralph Faulkner, and Patrick Crean, made him an expert in all styles of swordplay. He has choreographed for shows ranging from Shakespeare to contemporary at the Colorado, Oregon, Berkeley, and Alabama Shakespeare Festivals, Stage West, and Berkeley Repertory Theatre. In Atlanta, for Theatre In The Square, Georgia Ensemble Theatre, and the Alliance Theatre. In 1991 his screenplay about the Fencing world, *By The Sword*, was made into a feature film starring Eric Roberts and F. Murray Abraham.

STEPHANIE BUSING (SCENIC DESIGNER) [SHE/HER] is a designer, animator, and scenic artist based in Atlanta, GA. She designs and produces content for theatre productions, museums, commercial and residential spaces, and film. She is especially drawn to new works, social justice initiatives, and educational projects. She holds an M.F.A. from the University of Texas at Austin in Integrated Media for Live Performance.

MARIE QUINTERO (COSTUME DESIGNER) [SHE/HER] is a native Atlanta designer. Marie is excited to be working again with Theatrical Outfit. She began working on costumes professionally in 2007, including eight years as Norcostco's regional costume rental manager. In that time, Marie has worked with hundreds of schools, theatres, and production companies; as well as taught many workshops on stage makeup and wardrobe. Currently, she volunteers with the Northeast Atlanta Ballet where her daughter is a company member. Outside of theatre, Marie works on a sustainable urban agriculture project called The Rooted Peach. She enjoys time with her children and husband camping, hiking, and going on adventures.

MARY PARKER (LIGHTING DESIGNER) [SHE/HER] is very proud to have been living and creating art in greater Atlanta for almost 20 years. She fell in love with the city rapidly and particularly with the arts and culture here. All one needs to do is drive down any street to experience the vibrancy and talent of the

locals. Her career in theatre didn't begin here, but here is where she found an exceptional home team to call her own. She deeply believes artists are a vital part of any city or community and is very grateful for Atlanta's embrace of her. Mary designs primarily in Atlanta, but also all over the eastern United States. Her work has been showcased everywhere from regional theatre, to dance, and across a wide variety of universities. "The purpose of art is washing the dust of daily life off our souls." Pablo Picasso

JAMES BIGBEE GARVER (SOUND DESIGNER) [HE/HIM] has over 15 years of experience composing music and creating sound designs for live performance, podcasts, films, & art installations. His music and designs have been heard Off Broadway, at The Apollo Theatre, Film Society of Lincoln Center, three different Smithsonian Museums, Brooklyn Academy of Music, PS-122, Woolly Mammoth Theatre, Signature Theatre, Folger Theatre, Studio Theatre, and A Contemporary Theatre. His recent work for broadcast includes Pushkin Industries, WGXC radio, and Abrams Art Books. He has also served as Voice Editor and consulted on artificial voice projects for Microsoft Research and Descript. This is his Theatrical Outfit debut. Garver is based in upstate New York. More information at bigbee.org.

RYAN BRADBURN (SPECIALTY PROPERTIES DESIGNER) [HE/HIM] is excited to be working with Theatrical Outfit! Recent theatrical work includes Theatre Emory's *Tatischeff Cafe*, South Carolina Children's Theatre's *Spookley The Square Pumpkin*, and Greenville Theatre's *The Producers*. Ryan would like to thank TO for all their love and support!

CAROLINE COOK (HAND PROPERTIES DESIGNER) [SHE/HER] is a 2020 graduate from Oglethorpe University and former Production Apprentice at Theatrical Outfit. She is so excited to be back after helping kick off the 2021/2022 Season as a PA with *An Iliad*! Past credits include *Well Intentioned White People* (SM), *Raising The Dead* (SM), *A Hundred Words for Snow* (PA), and *Fires in the Mirror* (PASM) with Theatrical Outfit; *The Normal Heart* (SM) and *Other Desert Cities* (SM) with Rehearsal Room C; and *Servant of Two Masters* (ASM) at Oglethorpe University Theatre.

KATIE SCARLETT GRAVES* (STAGE MANAGER) [SHE/HER] is very excited to return to ATL and is thrilled to be making her Theatrical Outfit debut! She has previously worked in the ATL area with Theatre Emory for several shows including *The Nether*, *The Tatischeff Cafe*, *The Elaborate Entrance of Chad Deity* and *The Anointing of Dracula*. Katie has worked up and down the eastern coast traveling from the Boston/Cape Cod area, to ATL and FL. She is the Resident Production Stage Manager at The Wellfleet Harbor Actors Theatre in Wellfleet, MA. Selected favorite Stage Manager credits include *Nat Turner in Jerusalem*, *Orson's Shadow*, *Lenin's Embalmers*, and *Murder for Two*.

*Appearing through an Agreement between this theatre, Theatrical Outfit, and Actors' Equity Association, the Union of Professional Actors and Stage Managers in the United States.

MATT TORNEY (ARTISTIC DIRECTOR) [HE/HIM] joined Theatrical Outfit in July of 2020. Originally from Belfast, Matt worked as a freelance director in Ireland before moving to the US in 2006 to complete an MFA in directing at Columbia University. He has directed extensively in New York, regionally in the US, and internationally, and his work has been nominated for numerous awards. Before coming to TO, Matt served as Associate Artistic Director at Studio Theatre in Washington, DC for six years. His recent work includes *An Iliad* by Lisa Peterson & Denis O'Hare, *A Hundred Words for Snow* by Tatty Hennessy, *Doubt* by John Patrick Shanley (nominated for three Helen Hayes Awards), *If I Forget* by Steven Levenson (nominated for three Helen Hayes Awards), *MotherStruck!* by Staceyann Chin (nominated for two Helen Hayes Awards), *Translations* by Brian Friel, *The Hard Problem* by Tom Stoppard, and a ballet based on *The Love Song of J Alfred Prufrock* for Chamber Dance Co. Matt also has significant experience as an art director for TV and Film.

GRETCHEN E BUTLER (MANAGING DIRECTOR) [SHE/HER] joined the staff of Theatrical Outfit in the fall of 2018, returning to the very place where she had her first professional job in Atlanta theatre over 20 years ago. She holds a BA in Theatre from Randolph-Macon Woman's College and an MFA in Theatre Management from the Hilberry Theatre at Wayne State University. Gretchen worked as a freelance Stage Manager, Box Office Associate, and Arts Educator throughout Atlanta prior to joining the staff of Georgia Ensemble Theatre (GET) as their Production Manager in 2006. After 8 years with GET, she became the first Managing Director of Serenbe Playhouse, eventually moving into the role of Director of Operations of the Serenbe Institute for Art, Culture and the Environment, parent company of the Playhouse. Gretchen is a proud graduate of ALMA (Arts Leaders of Metro Atlanta), as well as a member of Phi Beta Kappa and Omicron Delta Kappa. She feeds her passion for civic service through Atlanta Woman's Club, where she serves as Treasurer and chairs the COVID-19 Relief Fund grant program; Kingswood United Methodist Church, where she chairs the Staff Parish Relations Committee; and the Board of Directors of The Sunflower Initiative, which funds scholarships for students attending women's colleges.

ADDÆ MOON (ASSOCIATE ARTISTIC DIRECTOR) [HE/HIM] is an Atlanta based playwright, dramaturg, director and cultural worker. He is the Associate Artistic Director at Theatrical Outfit, an Artistic Associate with Found Stages Theatre and a co-founder of the performance collective Hush Harbor Lab. Addæ has served as a resident dramaturg with Working Title Playwright's Ethel Woolson Lab. He was the recipient of the 2015 International Ibsen Award for his dramaturgical work on the project *Master Comic* and the 2014 John Lipsky Award from the International Museum Theatre Alliance (IMTAL) for his immersive play *Four Days of Fury: Atlanta 1906*. Addæ was also a member of Alliance Theatre's 2015-2016 Reiser Artists' Lab as co-writer on the immersive project *Third Council of Lyons* with Found Stages. His recent immersive co-collaborations include *Frankenstein's Ball* (2019/2020) and *Frankenstein's Funeral* (2019) both with Found Stages. As the former Literary Manager at Horizon Theatre Company, he served as dramaturg on the early development projects for Marcus Gardley, Lauren M. Gunderson, Tanya Barfield and Janece Shaffer. Addæ received his BA in Theatre Arts from Clark Atlanta University and an MFA in Playwriting from the Professional Playwright's Program at Ohio University. He is also a member of Literary Managers and Dramaturgs of America (LMDA) and The Fence Network.

ROCHELLE SHINN (GENERAL MANAGER) [ANY] is responsible for Theatrical Outfit's financials and business administration. Rochelle also manages Theatrical Outfit's intern program and teaches Theatrical Design and Production at GSU. She has an MFA in Scenic Design from Penn State and a BA in English from Western Michigan University. Past work experience includes Production Manager, Scenic Artist, Mask Designer, Props Designer, Stage Manager and Set Designer. She has designed sets for over 500 shows including productions at Theatrical Outfit, 7 Stages, Actor's Express, Alliance Theatre, Aurora Theatre, Center for Puppetry Arts, Dad's Garage, Georgia Ensemble, Georgia Shakespeare, Horizon Theater, Interlochen Center for the Arts, Kenny Leon's True Colors Theatre, Portland Center Stage, Synchronicity and Theatre in the Square. Rochelle and her husband Pete Shinn designed scenery and lights for the 1996 International Olympic Committee Opening Session at Symphony Hall in Atlanta. Recognitions include Atlanta ABBY Artist of the Year, Kennedy Center ACTF Theatrical Design Excellence in Scenery, and Prague Quadrennial Scenery Exhibit of *A Midsummer Night's Dream*. Rochelle is the proud daughter of Roger and Ellie Barker. She is grateful for the love and support of her family, friends and extended theater family. Rochelle is honored to support the Pete Shinn Memorial Fund at the Alliance Theatre.

TESS MALIS KINCAID (DEVELOPMENT DIRECTOR) [SHE/HER] joined the staff of TO in 2017. She has a long history as an arts administrator, having previously served as Director of Marketing and Development at Georgia Ensemble Theatre for many years. Tess is also an actor and director with her work having been seen on stage at theatres throughout Atlanta, and regionally across the country at theatres including Arena Stage (DC), Marin Theatre Company (CA), North Carolina Shakespeare Festival, and People's Light (PA). Tess also works often in TV/Film ("*Ozark*", "*Bluff City Law*," *The Mule*, *Hillbilly Elegy*, and more). She is honored to have three times received the Suzi Bass Award for Outstanding Lead Actress. She is a graduate of Wake Forest University and the Alliance Theatre Professional Actor Intern Program. She serves on the Board of the Jo Howarth Noonan Foundation which seeks to promote the work of female theatre artists over 40. She is a proud member of Actors' Equity Association. Tess is married to actor Mark Kincaid, and they have a beautiful daughter, Barbara.

RYAN OLIVETI (MARKETING DIRECTOR) [HE/HIM] is currently in his third season as Marketing Director at Theatrical Outfit! Ryan is a graduate of Rider University in Lawrenceville, NJ & the Actor's Express Apprentice Program. Ryan has previously served on staff at both Horizon Theatre Company (Marketing Director) & Serenbe Playhouse (Associate Artistic Director). Ryan is also a director. Directing credits include: *Slow Food* (Theatrical Outfit); *ART*, *Charlotte's Web*, *The Secret Garden* (Serenbe); *A Nice Family Christmas* (Stage Door Players). Assistant Director: *Candide*, *Warrior Class* (Alliance Theatre); *Dividing the Estate* (Theatrical Outfit); *Hands On A Hardbody* (Aurora Theatre), *Detroit* (Horizon Theatre); *Equus*, *Seminar* (Actor's Express); *Picnic* (Stage Door Players); many at Serenbe. Thanks to my family, friends, cat, mentors. Follow Ryan's adventures on Instagram & Twitter at @ryanoliveti.

MONTY WILSON (TECHNICAL DIRECTOR) [HE/HIM] is originally from Ocala, Florida & attended Berry College pursuing a BA in Theatre. From June 2016-June 2019 he served as the Assistant Technical Director for the Berry College Theatre Company. He is also credited with designing the set for Berry College's 2018 production of *Silent Sky*. He spent the summers of 2017 and 2018 working for the Contemporary American Theatre

Festival. In January – March of 2020 he worked for Everyman Theatre in Baltimore, Maryland in the scene shop. He is now serving his first season at Theatrical Outfit.

ABAGAIL DAWKINS (BOX OFFICE MANAGER) [SHE/HER] is an Atlanta-bred arts administrator and holds a BA in Theatre & Performance Studies from Kennesaw State University. For almost a decade, she has been a freelance Teaching Artist, Assistant Director, and Box Office Associate at a number of Atlanta theatres. She joined TO in the summer of 2019 and now proudly serves as the Box Office Manager. When not in a theatre, you can find her outdoors hiking or mountain biking.

WENDELL JOHNSON (HOUSE MANAGER) [HE/HIM] is responsible for ensuring patrons have an enjoyable and safe experience at the theatre. An Atlanta native, he is a retired human resources professional from Amoco Corporation. He spent over 28 years in numerous assignments in numerous places around the globe.

KAT DEZELL (PRODUCTION APPRENTICE) [SHE/HER] was born and raised in Milton, Georgia. Kat is a recent graduate of the Savannah College of Art and Design with a BFA in production design and a concentration in costume design. From a young age, Kat has always had an appreciation of live theater, dance, and entertainment, and the visual storytelling that costume design provides to a production. At SCAD she honed her skills and creativity to emerge a costume illustrator and designer. With trained technical skills in costume design, illustration, construction/fabrication, aging/dying/distressing, and special effects makeup, Kat enjoys working with fellow creatives to bring costumes to life on the stage and screen!

NESTOR LOMELI (ARTISTIC APPRENTICE) [HE/HIM] is a recent graduate of Emory University with a BA in Theater Studies, concentrating in Arts Management. He is an aspiring theater producer and is excited to begin his professional career with Theatrical Outfit as an Artistic Apprentice. While attending Emory, Nestor served as the Artistic Director for the student theater organization, Dooley's Players, where he has produced over 4 productions per academic year. He strives to create necessary dialogue through live storytelling and is thrilled to be doing so with Theatrical Outfit for this season.

KESHAWN MELLON (ARTISTIC APPRENTICE) [HE/HIM] See Cast bios.

GABBY PERALTA (PRODUCTION APPRENTICE) [SHE/HER] is a recent graduate from the University of North Georgia and the Gainesville Theatre Alliance. Her degree is in Design and Technology with a focus in Stage Management. She has been doing theatre since she was a freshman in high school and spent most of her time in college at the Holly Theatre. Some of her favorite shows that she has been a part of are *Bright Star* and *Noises Off!* She is so excited for her Atlanta debut as the starring role of the TREE and the HOUND. The game's afoot. Enjoy the show!

ANGELA YANG (ARTISTIC APPRENTICE) [THEY/THEM] is a recent graduate from Emory University (Theater Studies & Economics, 2020). They have a great passion for visual art, theatrical design, and directing on stage, and hope to continue pursuing their art by working in the regional Atlanta professional theater scene. Long term, they would like to produce contemporary plays that investigate the complexities of Asian American identity on a national and international scale. They enjoy working on virtual theater projects outside of work within their co-founded production company, f-SQUARED Productions, and spoiling their cat, Texas Pete.

10,000+

(MEMBERS OF **THE GAME CHANGERS**
VISIONARY DONOR CIRCLE)

Anonymous
AEC Trust
Cheryl & Chris Bachelder
Arthur M. Blank Family
Foundation
City of Atlanta Mayor's Office of
Cultural Affairs
Bill & Peg Balzer
Walter G. Canipe Foundation
– Kent & Ann Canipe
Florida & Doug Ellis
Fulton County Arts Council
Georgia Council for the Arts
Goldman Sachs
Kilpatrick Townsend
& Stockton LLP
Lettie Pate Evans Foundation
Charlie & Anne Henn
John Knott & Chad Hardigree
Wm Edward & Deborah Laity
Art & Laurie Mazor
Billy & Gladys Mitchell
Sandy & Kim Muthersbough
Mary & Wendell Reilly
Alexandra Roddy
The Shubert Foundation, Inc.
McKittrick & Meredith Simmons
David & Cameron Stockert
– Ives
Stephen Swicegood
& Ruth Ann Rosenberg
Truist
WarnerMedia

\$5000 - \$9999

(MEMBERS OF **THE CORE INVESTORS**
VISIONARY DONOR CIRCLE)

Anne McCary Ballard
Tommy & Nancy Barrow
CJ Bolster & Helen Eisler
Gretchen Butler
Anne Hayden

Pearl & Thomas McHaney
C. Robert & Gretchen H. Neal
Vicki & Howard Palefsky
Publix SuperMarkets Charities
Jeff & Jennifer Seavey

\$1500 - \$4999

(MEMBERS OF **THE CONVERSATION**
STARTERS VISIONARY DONOR CIRCLE)

Anonymous
Christina & Paul Blackney
Scott Bryan & Stacy Zeigler
Ricardo Corporan & Robert Fusi
Deloitte Consulting, LLP
Cydnee Dubrof
& Rob McDonough
Caroline & Jake Duffy
Warren Gump
Necole Jackson-DeJoie
& Wendell DeJoie
Alexander & Susan Johnson
Mark & Gai Lynn McCarthy
Karen & Richard McCrea
The Honourable
Margaret H Murphy
Jessica Pardi & Bobby Lanier
Virginia Philip
Barbara & Isaiah Rosenblit
John Savage
Jennifer & Dan Van Horn
Stephanie Watkins
Zeller Realty Group

\$1000 - \$1499

Neil & Viva Araki
Dr. Harold Brody
& Donald Smith
Georgia's Own Credit Union
Dick & Terry Ingwersen
Tom & Beverly Key
Mary & Ray Maynard
Robert & Margaret Reiser
Rochelle Shinn
Matt Torney
Tim & Mary Yoder

\$500 - \$999

Anonymous
Katharine Anderson
Bill & Elizabeth Borland
George Boyd
Theresa & Michael Buscher
Susan & Steve Creel
Ben & Allison Hill
Mira & Teri Jourdan
Donna & Doug Kallman
Ann Carter & Allen McDonald
Sharon Pauli
Scott & Debra Pyron
Louise Reaves
Suzanne Shull
Taylor Family Fund
Mary Ulmer Jones

\$250 - \$499

Belinda & Jeff Allen
Joy Borra
Lee Buechele
Carol Comstock & Jim Davis
Leslie Gordon
Eric Hunter & Susan Allen
Janin & Tad Hutcheson
Valerie & Raymond Kelleher
Tess Malis Kincaid
Klimchak
Mel Konner & Ann Kruger
IN HONOR OF TESS MALIS KINCAID
Marianne Lambert
Sandra Michaels & Jack Martin
Lauren Morris & Cole Getzler
Ryan Oliveti
Rosalinda Ratajczak
Lois & Donald Reitzes
Kathy Solley & Tom Friedrichs
Susan Stiefel
Jill Sweetapple
Simmie & Noeouida Walker



The following people donated to Theatrical Outfit in memory of Graham Martin, our longtime trustee, advocate, and friend. Graham served as TO's Board Chair for 5 years and was instrumental in the creation of our home at the Balzer Theater at Herren's, whose rehearsal hall bears his name. His support of TO continued long after his board service ended and carries on today with these gifts given in his memory. We are touched by this outpouring of love.

Anonymous
Charles Anderson
Peg & Bill Balzer
Kate Balzer
G. Niles Bolton
Christine & Neill Bright
Jody & Cliff Cohen
Camille Cook & Shapard D. Ashley
& John Myrick Ashley
David Cunningham
E. Alton Curtis, Jr.
Jim Daniels
The Davis Family
Angela & Scott Eanes
Treasure Edwards
Jim Estes & Family
Barry & Meryl Greenhouse
Mary Jane Haggerty
Keith & Sandra Hart
David and Mia Hartley
Ben & Allison Hill
Paul Horning
Chris Hutchings
W. Austen & Tania C. Jackson

George & Janet Johnson
Lisa Klimenko
Beth Long
Tom Lopp
Marsha Lorentzen
Andre Schnabl & Denny Marcus
Leslie Mercier
Carter Hampton Morris
The L. B. Oran Family
John & Susan Petrakis
Sam & Barbara Pettway
Ed & Lana Quibell
Anne & Jerry Reh fuss
Rochelle Shinn
Lynn & Skip Sloan
Laura Smith
Wayne & Liz Stewart
Sweetwater Auto Tag & Wm.
T. Martin Insurance Agency Inc.
Joe & Mary Trino
Stephanie Watkins
Nan & Charlie Wilson
Irene Wolkoff
Woolard Construction Co., Inc.

JOIN OUR FAMILY OF VISIONARY DONORS

Our Visionary Donors are the core supporters of Theatrical Outfit who help us achieve our mission to “produce world-class theatre that starts the conversations that matter.” Every dollar that is donated to TO both serves as an investment in the creative future of Atlanta and empowers us to build and strengthen our community of artists and audiences.

Donors at each level of membership receive unique benefits throughout the season.

2021-2022 VISIONARY DONOR BENEFITS:

	GAME CHANGERS (\$10,000+)	CORE INVESTORS (\$5,000-\$9,999)	CONVERSATION STARTERS (\$1,500-\$4,999)
SPECIAL ACKNOWLEDGMENT IN PLAYBILL AND ON WEBSITE	X	X	X
TWO EXCLUSIVE APPRECIATION EVENTS DURING THE SEASON	X	X	X
TICKETS TO 2021-22 SEASON	4 SEASON TICKETS	2 SEASON TICKETS	2 GUEST PASSES
EXCLUSIVE Q&A WITH CAST AND CREW AFTER A PERFORMANCE	X	X	X
PARKING FOR ONE CAR AT THE LUCKIE ST. LAZ PARKING GARAGE FOR ALL YOUR TICKETED PERFORMANCES	X	X	
EXCLUSIVE BEHIND-THE-SCENES REHEARSAL SNEAK PEEK	X	X	
PRIVATE DINNER ONSTAGE WITH MATT, GRETCHEN & TO STAFF	X		

Theatrical Outfit is a 501(c)(3) non-profit organization. Your gift is tax deductible to the full extent of the law. Should your place of business have a matching gift program, please consider registering your donation to increase the impact of your gift.

DONATE ONLINE AT <https://www.theatricaloutfit.org/support-us/donate/>

QUESTIONS? Contact Tess Malis Kincaid, *Development Director*,
at tess.kincaid@theatricaloutfit.org

CITY LIGHTS

WITH **LOIS
REITZES**

ARTS • CULTURE • CONVERSATION

Weekdays • 11am & 8pm
Sundays • 7pm

WABE 90.1
Where ATL meets NPR

 @LoisReitzes

 @wabenews

 @wabe



Herren's LEGACY SOCIETY

Create a legacy by joining Theatrical Outfit's newly named Herren's Legacy Society. Honor your commitment to the cultural vitality of downtown Atlanta and ensure the future of this professional theatre rooted in excellence, responsibility, and community. A bequest to Theatrical Outfit costs you nothing now but enables you to make a large, meaningful gift that can impact this organization for years to come. Society membership will be included in print recognition but may be made in Tribute or Anonymously based on the preferences of the donor. For further information or to receive a membership form, contact DEVELOPMENT@THEATRICALOUTFIT.ORG.



CONTINUE THE ATL

Holiday Tradition

AND DONATE TODAY



JOIN US FOR THE RETURN OF
THE BALZER JAZZ SERIES
FEATURING JOE GRANSDEN

FEB 27, 2022 • APRIL 10, 2022 • JUNE 12, 2022
TICKETS ON SALE SOON!





P R E S E N T S

THE WELCOME TABLE

A PARTNERSHIP WITH



NOVEMBER 17 - DECEMBER 19, 2021
Collect. Donate. Volunteer.

COLLECT:

Bring toys, clothing, home items to donate when you see

—KEN LUDWIG'S—
**BASKERVILLE: A SHERLOCK HOLMES
MYSTERY**

EXAMPLE ITEMS:

Puzzles, Books, Gift Cards, Hats, Mittens, Cleaning Supplies

DONATE & VOLUNTEER:

Want to do more than donate an item?

You can also make a financial donation & volunteer at the shelter.

VISIT THEATRICALOUTFIT.ORG

For Full List Of Donatable Items & More Information



THEATRICAL
OUTFIT

PRESENTS ITS

2021 – 2022

MAINSTAGE SEASON

A RETURN TO THE STAGE

— KEN LUDWIG'S —
BASKERVILLE: A SHERLOCK HOLMES MYSTERY

NOVEMBER 17 – DECEMBER 19, 2021

**BRIGHT
HALF LIFE**

BY TANYA BARFIELD
FEBRUARY 2 – 27, 2022

THE **WOLF**
AT THE END OF THE BLOCK

BY IKE HOLTER
MARCH 30 – APRIL 24, 2022

**LADY DAY AT EMERSON'S
BAR & GRILL**

BY LANIE ROBERTSON • STARRING TERRY BURRELL
JUNE 1–26, 2022

PLUS: THE WELCOME TABLE • GRAHAM MARTIN'S UNEXPECTED PLAY FESTIVAL • BALZER JAZZ SERIES

VIP PACKAGES & SINGLE TICKETS ON SALE NOW